

Brunswick County Schools, NC Redistricting Study

Options Statistics

Revised: 11/12/2019



Enrollment Statistics Assumptions

The following document contains a series of tables and maps that depict statistics for current schools and boundaries, as well as redistricting options that are being evaluated. This information will help inform all committee members on how schools could be potentially impacted as a result of potential redistricting adjustments, along with a comparison to current school information.

Glossary of Terms

Capacity -the number of students that an individual school has the physical capacity to enroll and can be reasonably accommodated in a facility.

Utilization - Utilization is the enrollment divided by the capacity, described as a percentage.

Live-in students - Students residing inside of a school attendance boundary, regardless of where that student attends school.

Out of District students - Students that live outside of the Brunswick County School's boundary.

Unmatched students - Students whose address was not able to be located by the GIS.

Estimated Enrollment - Estimated Enrollment is calculated by adding the Live-in students, plus the Out of District and Unmatched students.

Option Impact - The number of Live-In students that change attending schools from the 2019-20 current enrollment given each option. In other words, an estimate of the total number of students that could be impacted per any of the options.

Feeder Pattern - The number of students living within the attendance boundary of both a lower grade cohort (ex. Elementary schools) and a higher-grade cohort (i.e. Middle School). This is given as both the number of Live-In students, and described as a percentage.



Elementary School Enrollment & Utilization Statistics

Elementary School	Grade Config	2019-20 Capacity	Total Enrolled	Enrolled Utilization
Belville Elementary	K -5	716	863	120.5%
Bolivia Elementary	K -5	567	416	73.4%
Jessie Mae Monroe Elementary	K - 5	498	443	89.0%
Lincoln Elementary	PK - 5	800	580	72.5%
Southport Elementary	K - 5	614	541	88.1%
Supply Elementary	PK - 5	701	595	84.9%
Town Creek Elementary	PK - 5	785	579	73.8%
Union Elementary	K - 5	600	574	95.7%
Virginia Williamson Elem	PK - 5	598	491	82.1%
Waccamaw ²	K - 8	572	471	82.3%
Total		6,451	5,553	86.1%

Student Counts based on 10/17/2019 BCS student database.

Elementary School	Grade Config	2019-20 Capacity	Total Enrolled	Enrolled Utilization	DRAFT Option 1 Estimated Enrollment ¹	DRAFT Option 1 Utilization ¹	DRAFT Option 2 Estimated Enrollment ¹	DRAFT Option 2 Utilization ¹	DRAFT Option 3 Estimated Enrollment ¹	DRAFT Option 3 Utilization ¹
Belville Elementary	K -5	716	863	120.5%	696	97.2%	671	93.7%	658	91.9%
Bolivia Elementary	K -5	567	416	73.4%	471	83.1%	454	80.1%	454	80.1%
Lincoln Elementary	PK - 5	800	580	72.5%	697	87.1%	750	93.8%	753	94.1%
Town Creek Elementary	PK - 5	785	579	73.8%	613	78.1%	602	76.7%	612	78.0%
Total		2,868	2,438	85.0%	2,477	86.4%	2,477	86.4%	2,477	86.4%

Student Counts based on 10/17/2019 BCS student database.

¹ Estimated Enrollment is calculated by adding the 2019-20 Out of District and Unmatched students to their currently enrolled school plus the K - 5th grade live-in totals within each option.



ES to MS Feeder Pattern

2019-20 ES Zone	2019-20 MS Zone	ES Attendance
Belville Elem	Leland Middle	100%
Bolivia Elem	South Brunswick Middle	100%
Lincoln Elem	Leland Middle	100%
Town Creek Elem	Leland Middle	77%
Town Creek Elem	South Brunswick Middle	23%

DRAFT Option 1 ES Zone	DRAFT Option 1 MS Zone	ES Attendance
Belville Elem	Leland Middle	100%
Bolivia Elem	South Brunswick Middle	100%
Lincoln Elem	Leland Middle	100%
Town Creek Elem	Town Creek Middle	100%

DRAFT Option 2 ES Zone	DRAFT Option 2 MS Zone	ES Attendance
Belville Elem	Leland Middle	100%
Bolivia Elem	South Brunswick Middle	100%
Lincoln Elem	Leland Middle	100%
Town Creek Elem	Town Creek Middle	100%

DRAFT Option 3 ES Zone	DRAFT Option 3 MS Zone	ES Attendance
Belville Elem	Leland Middle	100%
Bolivia Elem	South Brunswick Middle	100%
Lincoln Elem	Leland Middle	100%
Town Creek Elem	Town Creek Middle	100%



ES Option Impacts

The cells colored in green reflect live-in students who are not moved, and the cells colored in tan show the number of live-in students that are moved, where they are currently zoned, and where they will be zoned per the concept. The first table shows a sum of all students impacted per the concept.

Student Impact Estimates	
Option	Total K-5 Live In Students Impacted
Option 1	185
Option 2	210
Option 3	495

2019-20 ES	DRAFT Option 1 ES Zone	Total K-5 Live In Students	2019-20 ES	DRAFT Option 2 ES Zone	Total K-5 Live In Students
Belville Elem	Belville Elem	692	Belville Elem	Belville Elem	667
Belville Elem	Bolivia Elem	17	Belville Elem	Lincoln Elem	160
Belville Elem	Lincoln Elem	107	Belville Elem	Town Creek Elem	49
Belville Elem	Town Creek Elem	60	Bolivia Elem	Bolivia Elem	454
Bolivia Elem	Bolivia Elem	454	Jessie Mae Monroe Elem	Jessie Mae Monroe Elem	467
Jessie Mae Monroe Elem	Jessie Mae Monroe Elem	467	Lincoln Elem	Lincoln Elem	584
Lincoln Elem	Lincoln Elem	584	Southport Elem	Southport Elem	506
Southport Elem	Southport Elem	506	Supply Elem	Supply Elem	600
Supply Elem	Supply Elem	600	Town Creek Elem	Lincoln Elem	1
Town Creek Elem	Lincoln Elem	1	Town Creek Elem	Town Creek Elem	551
Town Creek Elem	Town Creek Elem	551	Union Elem	Union Elem	550
Union Elem	Union Elem	550	Virginia Williamson Elem	Virginia Williamson Elem	502
Virginia Williamson Elem	Virginia Williamson Elem	502	Waccamaw	Waccamaw	242
Waccamaw	Waccamaw	242			

2019-20 ES	DRAFT Option 3 ES Zone	Total K-5 Live In Students
Belville Elem	Belville Elem	546
Belville Elem	Lincoln Elem	107
Belville Elem	Town Creek Elem	223
Bolivia Elem	Bolivia Elem	454
Jessie Mae Monroe Elem	Jessie Mae Monroe Elem	467
Lincoln Elem	Lincoln Elem	584
Southport Elem	Southport Elem	506
Supply Elem	Supply Elem	600
Town Creek Elem	Belville Elem	108
Town Creek Elem	Lincoln Elem	57
Town Creek Elem	Town Creek Elem	387
Union Elem	Union Elem	550
Virginia Williamson Elem	Virginia Williamson Elem	502
Waccamaw	Waccamaw	242



Middle School Enrollment & Utilization Statistics

Middle School	Grade Config	2019-20 Capacity	Total Enrolled	Enrolled Utilization
Cedar Grove Middle	6 - 8	702	493	70.2%
Leland Middle	6 - 8	1136	1006	88.6%
Shallotte Middle	6 - 8	810	659	81.4%
South Brunswick Middle	6 - 8	858	794	92.5%
Town Creek Middle	6 - 8	530	0	0.0%
Waccamaw ²	K - 8	572	471	82.3%
Total		4,608	3,423	74.3%

Student Counts based on 10/17/2019 BCS student database.

Middle School	Grade Config	2019-20 Capacity	Total Enrolled	Enrolled Utilization	Option 1 Estimated Enrollment ¹	Option 1 Utilization ¹	Option 2 Estimated Enrollment ¹	Option 2 Utilization ¹	Option 3 Estimated Enrollment ¹	Option 3 Utilization ¹
Leland Middle	6 - 8	1136	1006	88.6%	746	65.7%	766	67.4%	775	68.2%
South Brunswick Middle	6 - 8	858	794	92.5%	731	85.2%	719	83.8%	719	83.8%
Town Creek Middle	6 - 8	530	0	0.0%	319	60.2%	311	58.7%	302	57.0%
Total		2,524	1,800	71.3%	1,796	71.2%	1,796	71.2%	1,796	71.2%

Student Counts based on 10/17/2019 BCS student database.

¹ Estimated Enrollment is calculated by adding the 2019-20 Out of District and Unmatched students to their currently enrolled school plus the 6 - 8th grade live-in totals within each option.



MS to HS Feeder Pattern

2019-20 MS Zone	2019-20 HS Zone	MS Attendance
Leland Middle	North Brunswick High	100%
South Brunswick Middle	South Brunswick High	100%

DRAFT Option 1 MS Zone	2019-20 HS Zone	MS Attendance
Leland Middle	North Brunswick High	100%
South Brunswick Middle	North Brunswick High	2%
South Brunswick Middle	South Brunswick High	98%
Town Creek Middle	North Brunswick High	78%
Town Creek Middle	South Brunswick High	22%

DRAFT Option 2 MS Zone	2019-20 HS Zone	MS Attendance
Leland Middle	North Brunswick High	100%
South Brunswick Middle	South Brunswick High	100%
Town Creek Middle	North Brunswick High	77%
Town Creek Middle	South Brunswick High	23%

DRAFT Option 3 MS Zone	2019-20 HS Zone	MS Attendance
Leland Middle	North Brunswick High	100%
South Brunswick Middle	South Brunswick High	100%
Town Creek Middle	North Brunswick High	76%
Town Creek Middle	South Brunswick High	24%



MS Option Impacts

The cells colored in green reflect live-in students who are not moved, and the cells colored in tan show the number of live-in students that are moved, where they are currently zoned, and where they will be zoned per the concept. The first table shows a sum of all students impacted per the concept.

Student Impact Estimates	
Option	Total 6-8 Live In Students Impacted
Option 1	331
Option 2	311
Option 3	302

2019-20 MS	DRAFT Option 1 MS Zone	Total 6-8 Live In Students
Cedar Grove Middle	Cedar Grove Middle	493
Leland Middle	Leland Middle	740
Leland Middle	South Brunswick Middle	12
Leland Middle	Town Creek Middle	246
Shallotte Middle	Shallotte Middle	675
South Brunswick Middle	South Brunswick Middle	719
South Brunswick Middle	Town Creek Middle	73
Waccamaw Middle	Waccamaw Middle	179

2019-20 MS	DRAFT Option 2 MS Zone	Total 6-8 Live In Students
Cedar Grove Middle	Cedar Grove Middle	493
Leland Middle	Leland Middle	760
Leland Middle	Town Creek Middle	238
Shallotte Middle	Shallotte Middle	675
South Brunswick Middle	South Brunswick Middle	719
South Brunswick Middle	Town Creek Middle	73
Waccamaw Middle	Waccamaw Middle	179

2019-20 MS	DRAFT Option 3 MS Zone	Total 6-8 Live In Students
Cedar Grove Middle	Cedar Grove Middle	493
Leland Middle	Leland Middle	769
Leland Middle	Town Creek Middle	229
Shallotte Middle	Shallotte Middle	675
South Brunswick Middle	South Brunswick Middle	719
South Brunswick Middle	Town Creek Middle	73
Waccamaw Middle	Waccamaw Middle	179



High School Enrollment & Utilization Statistics

High School	Grade Config	2019-20 Capacity	Total Enrolled	Enrolled Utilization
North Brunswick High	9 - 12	1479	1151	78%
South Brunswick High	9 - 12	1246	1043	84%
West Brunswick High	9 - 12	1778	1485	84%
Total		4,503	3,679	82%

Student Counts based on 10/17/2019 BCS student database.

Brunswick County Schools Elementary School Zones 2019-20

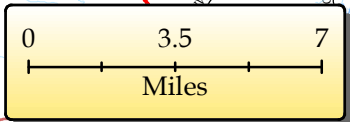
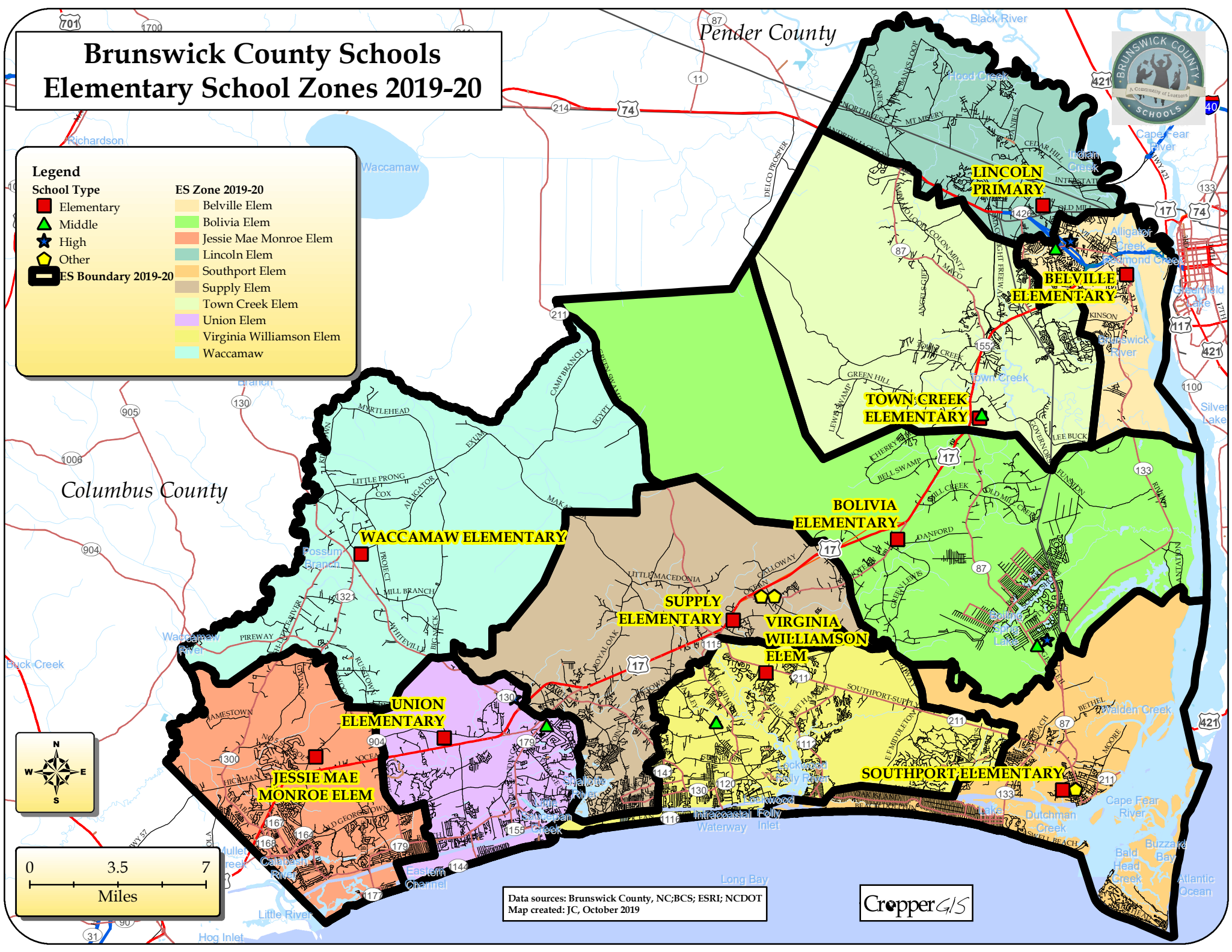
Legend

School Type

- Elementary
- ▲ Middle
- ★ High
- ◆ Other
- ES Boundary 2019-20

ES Zone 2019-20

- Belville Elem
- Bolivia Elem
- Jessie Mae Monroe Elem
- Lincoln Elem
- Southport Elem
- Supply Elem
- Town Creek Elem
- Union Elem
- Virginia Williamson Elem
- Waccamaw



Data sources: Brunswick County, NC; BCS; ESRI; NCDOT
Map created: JC, October 2019

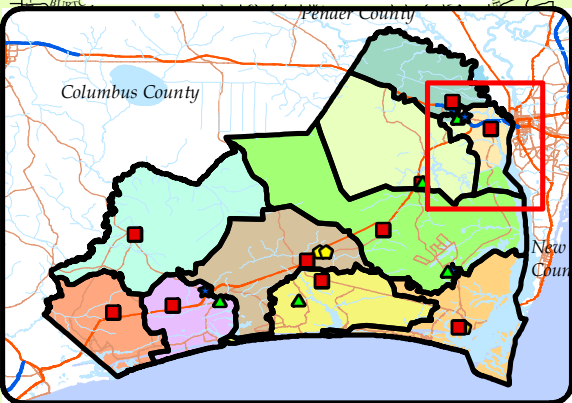
CropperGIS

Brunswick County Schools Elementary School Zones Option 1



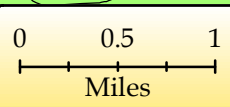
BELVILLE ELEMENTARY

VICINITY MAP



Data sources: Brunswick County, NC; BCS; ESRI; NCDOT
Map created: JC, November 2019

- | Legend | |
|-----------------------|----------------------------|
| School Type | ES Option 1 Zones |
| ■ Elementary | ■ Belville Elem |
| ▲ Middle | ■ Bolivia Elem |
| ★ High | ■ Jessie Mae Monroe Elem |
| ◆ Other | ■ Lincoln Elem |
| — ES Boundary 2019-20 | ■ Southport Elem |
| | ■ Supply Elem |
| | ■ Town Creek Elem |
| | ■ Union Elem |
| | ■ Virginia Williamson Elem |
| | ■ Waccamaw |



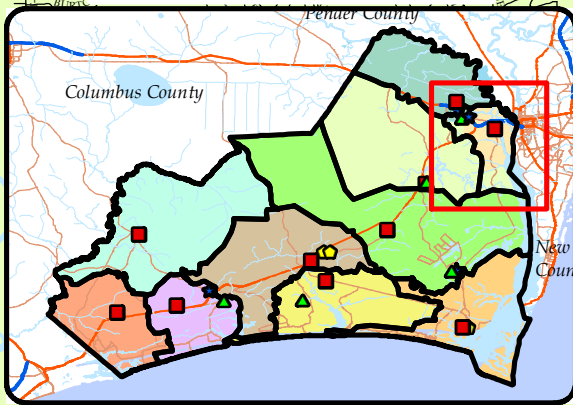
CropperGIS

Brunswick County Schools Elementary School Zones Option 2



BELVILLE ELEMENTARY

VICINITY MAP



Data sources: Brunswick County, NC; BCS; ESRI; NCDOT
Map created: JC, November 2019

Legend

School Type

- Elementary
- ▲ Middle
- ★ High
- ◆ Other
- ES Boundary 2019-20

ES Option 2 Zones

- Belville Elem
- Bolivia Elem
- Jessie Mae Monroe Elem
- Lincoln Elem
- Southport Elem
- Supply Elem
- Town Creek Elem
- Union Elem
- Virginia Williamson Elem
- Waccamaw

0 0.5 1
Miles

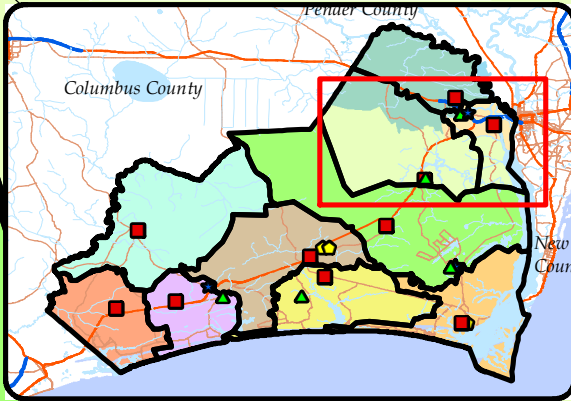


CropperGIS



Brunswick County Schools Elementary School Zones Option 3

VICINITY MAP



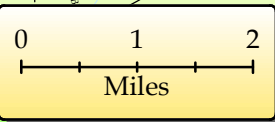
Legend

School Type

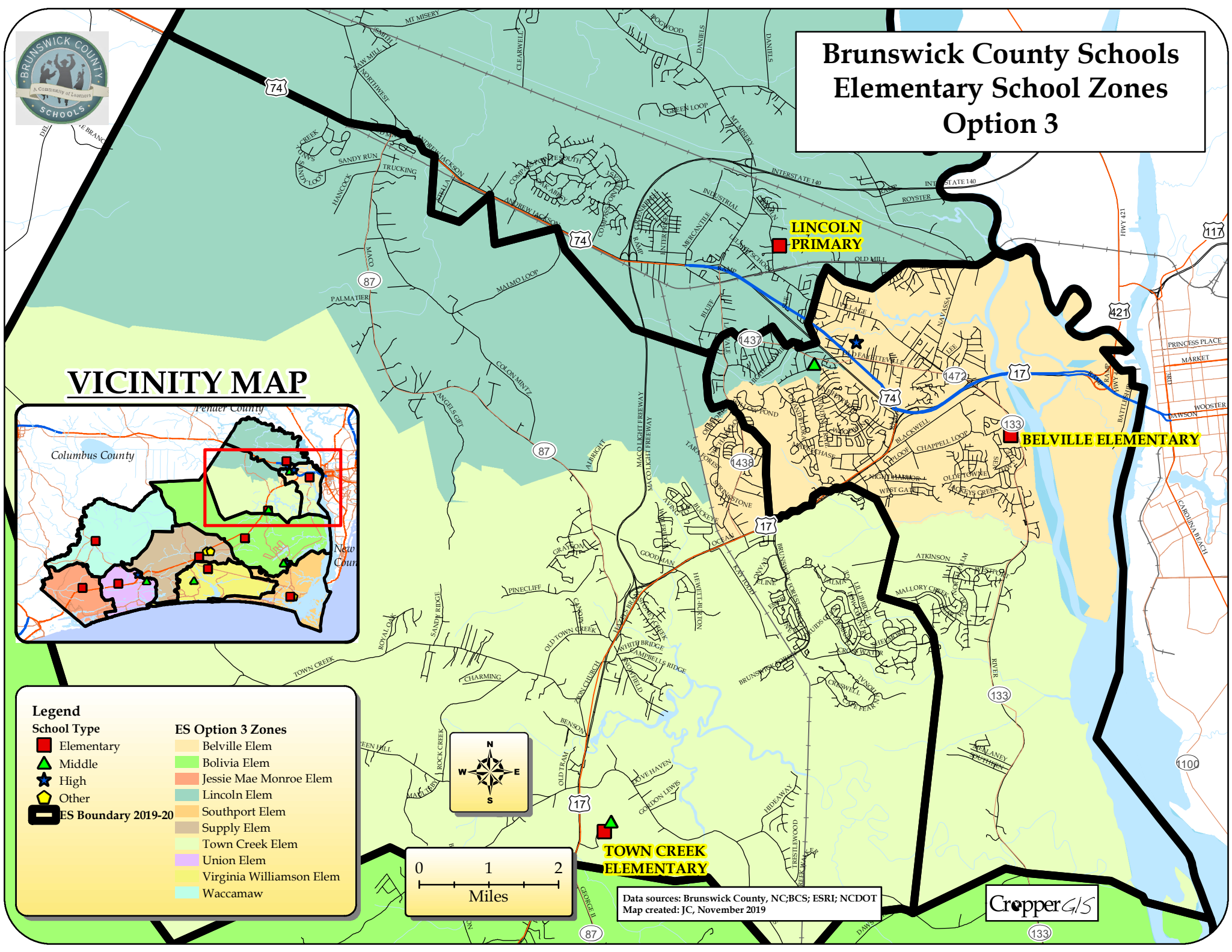
- Elementary
- Middle
- High
- Other
- ES Boundary 2019-20

ES Option 3 Zones

- Belville Elem
- Bolivia Elem
- Jessie Mae Monroe Elem
- Lincoln Elem
- Southport Elem
- Supply Elem
- Town Creek Elem
- Union Elem
- Virginia Williamson Elem
- Waccamaw



Data sources: Brunswick County, NC; BCS; ESRI; NCDOT
Map created: JC, November 2019



Brunswick County Schools Middle School Zones 2019-20



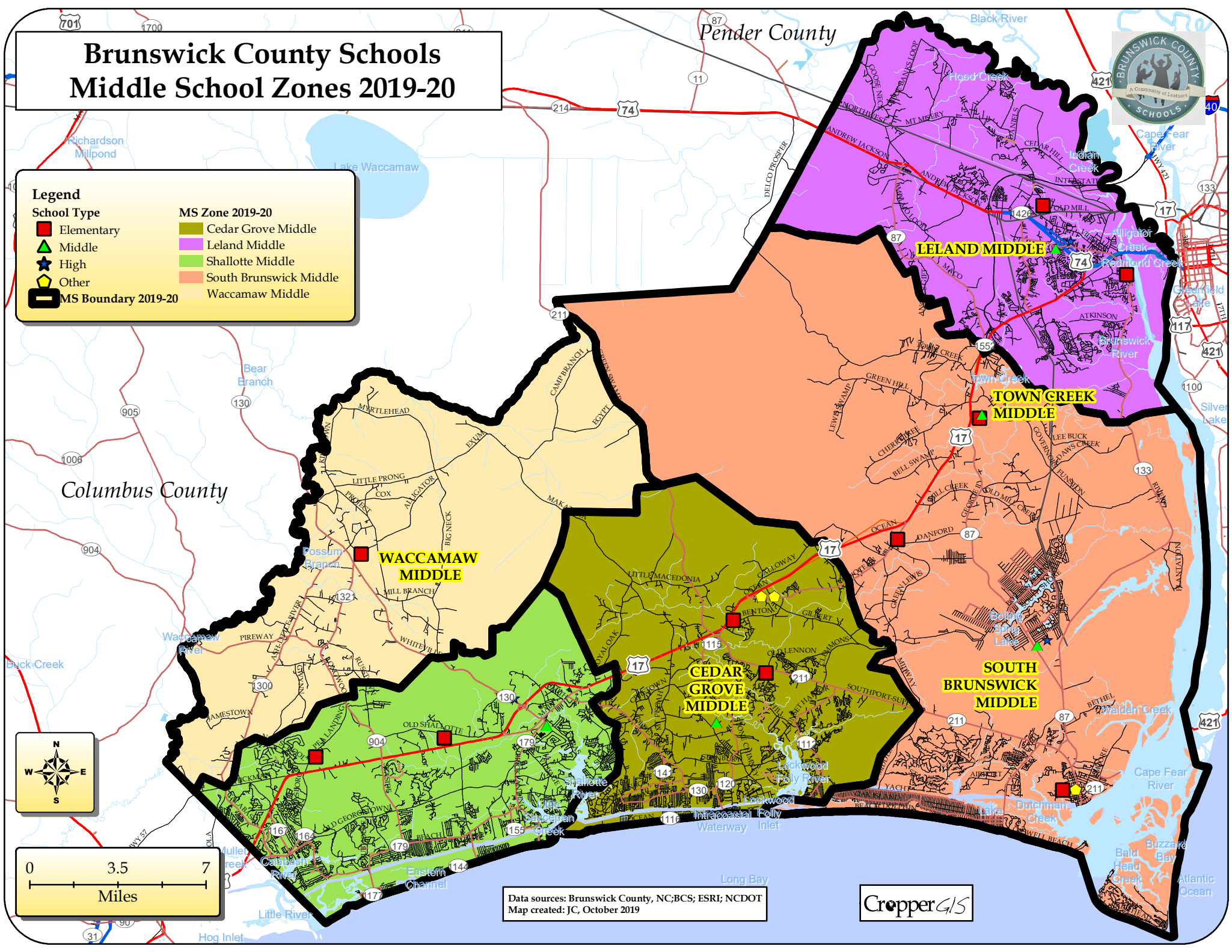
Legend

School Type

- Elementary
- ▲ Middle
- ★ High
- ◆ Other
- MS Boundary 2019-20

MS Zone 2019-20

- Cedar Grove Middle
- Leland Middle
- Shallotte Middle
- South Brunswick Middle
- Waccamaw Middle



Data sources: Brunswick County, NC; BCS; ESRI; NCDOT
Map created: JC, October 2019

CropperGIS

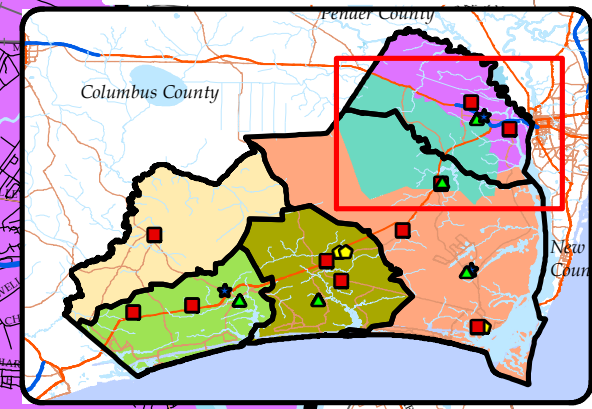


Brunswick County Schools Middle School Zones Option 1

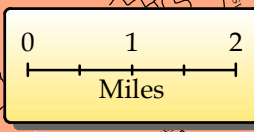
Legend
School Type
■ Elementary
▲ Middle
★ High
◆ Other
▬ MS Boundary 2019-20

MS Option 1 Zones
■ Cedar Grove Middle
■ Leland Middle
■ Shallotte Middle
■ South Brunswick Middle
■ Town Creek Middle
■ Waccamaw Middle

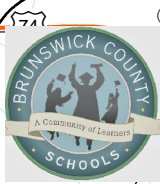
VICINITY MAP



CropperGIS



Data sources: Brunswick County, NC; BCS; ESRI; NCDOT
Map created: JC, November 2019

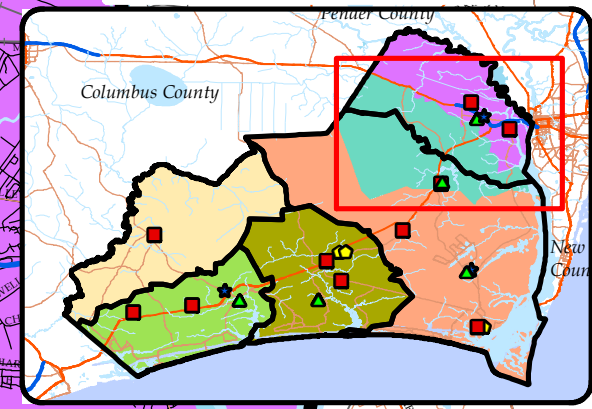


Brunswick County Schools Middle School Zones Option 2

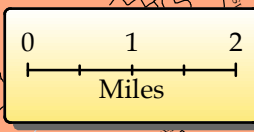
Legend
School Type
■ Elementary
▲ Middle
★ High
◆ Other
▬ MS Boundary 2019-20

MS Option 2 Zones
■ Cedar Grove Middle
■ Leland Middle
■ Shallotte Middle
■ South Brunswick Middle
■ Town Creek Middle
■ Waccamaw Middle

VICINITY MAP



CropperGIS



Data sources: Brunswick County, NC; BCS; ESRI; NCDOT
Map created: JC, November 2019

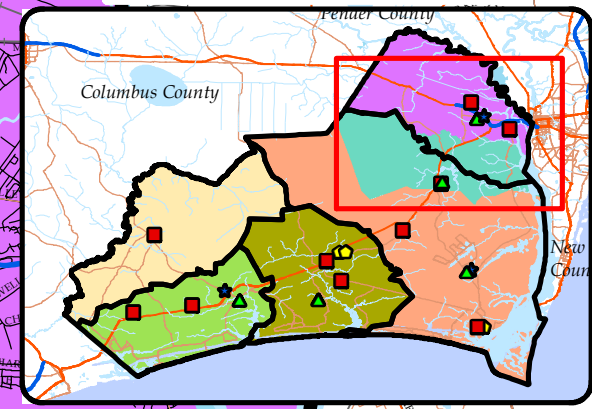


Brunswick County Schools Middle School Zones Option 3

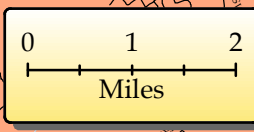
Legend
School Type
■ Elementary
▲ Middle
★ High
◆ Other
▬ MS Boundary 2019-20

MS Option 3 Zones
■ Cedar Grove Middle
■ Leland Middle
■ Shallotte Middle
■ South Brunswick Middle
■ Town Creek Middle
■ Waccamaw Middle

VICINITY MAP



CropperGIS

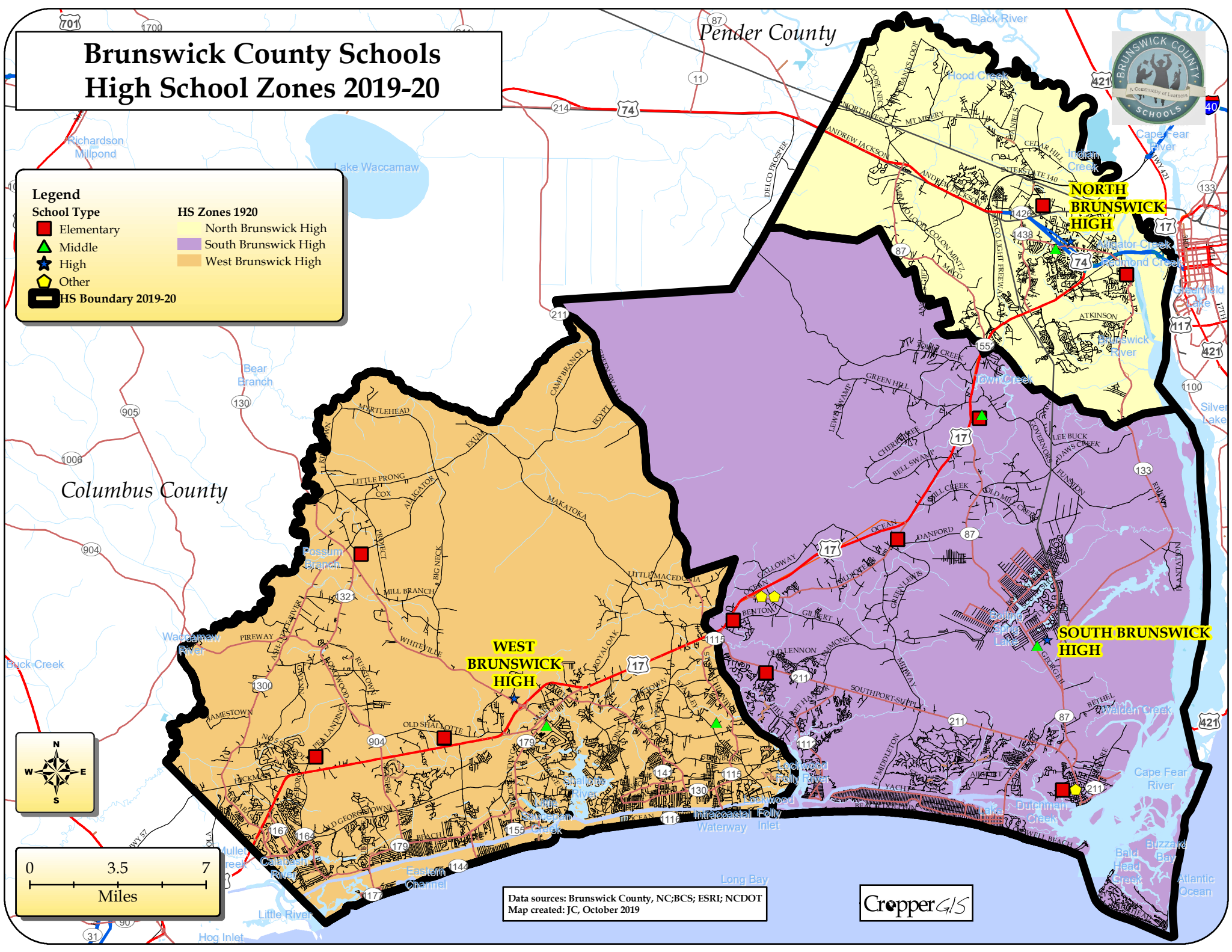


Data sources: Brunswick County, NC; BCS; ESRI; NCDOT
Map created: JC, November 2019

Brunswick County Schools High School Zones 2019-20



- Legend**
- School Type**
- Elementary
 - ▲ Middle
 - ★ High
 - ◆ Other
 - HS Boundary 2019-20
- HS Zones 1920**
- North Brunswick High
 - South Brunswick High
 - West Brunswick High



Data sources: Brunswick County, NC; BCS; ESRI; NCDOT
Map created: JC, October 2019

CropperGIS